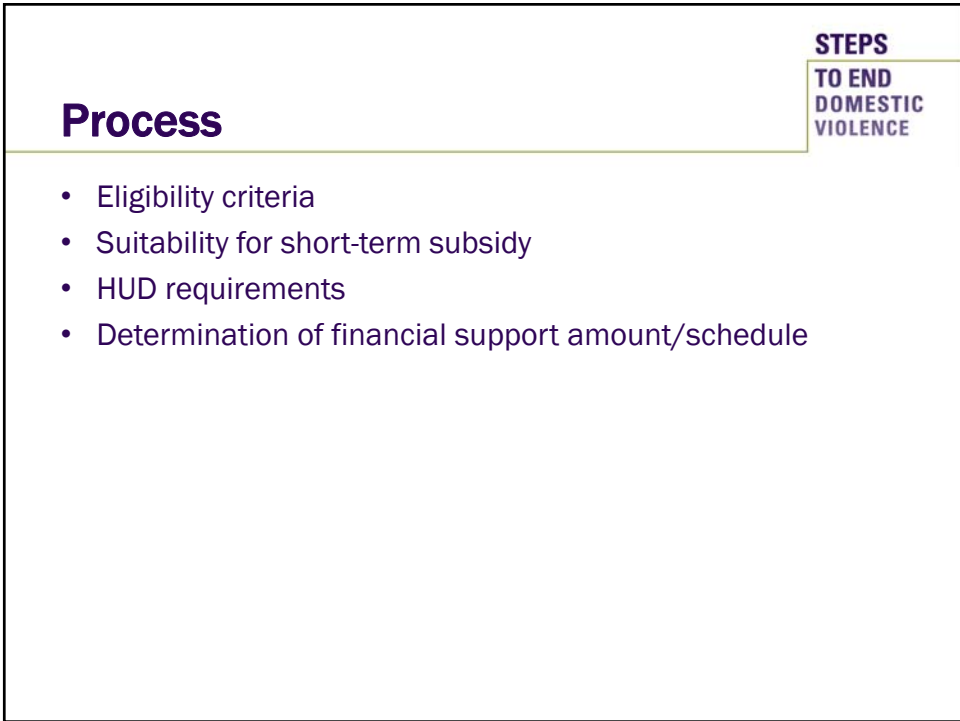


**STEPS  
TO END  
DOMESTIC  
VIOLENCE**

**Domestic Violence Housing First  
Rapid Rehousing Project**

June 7, 2018



**STEPS  
TO END  
DOMESTIC  
VIOLENCE**

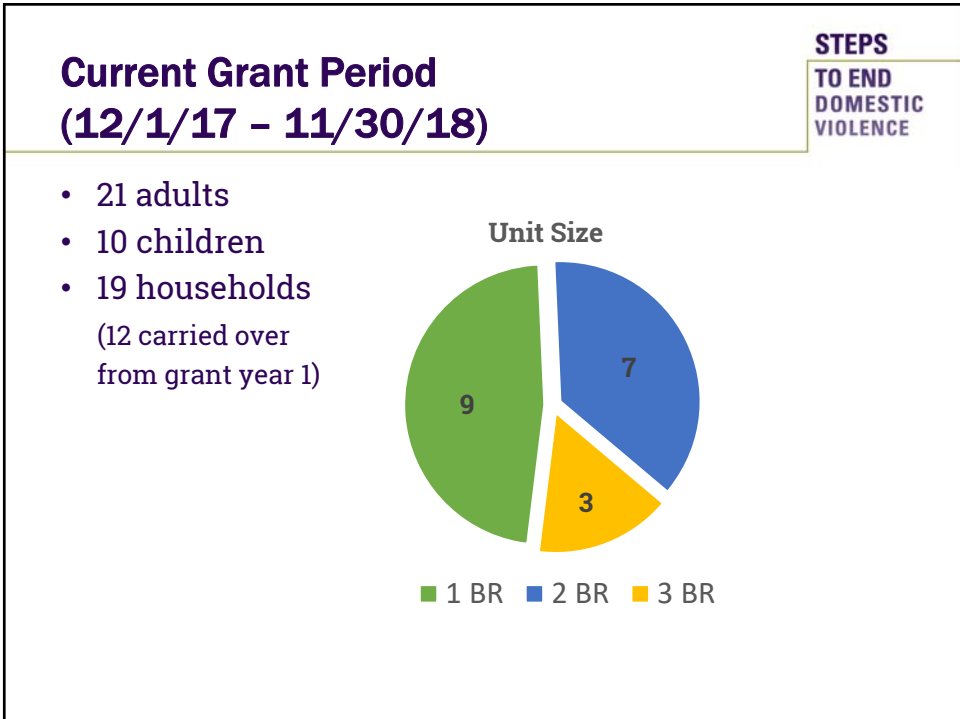
**Process**

- Eligibility criteria
- Suitability for short-term subsidy
- HUD requirements
- Determination of financial support amount/schedule

**STEPS  
TO END  
DOMESTIC  
VIOLENCE**

## Years 1 and 2

Measurement	Minimum HUD Goal	DV Housing First Previous Year numbers	DV Housing First Year to Date numbers
Budget Amount	NA	\$139,802	\$147,862
Amount of funds returned to HUD		\$27,113	
# of beds	NA	21	
# HH served	NA	13	
Bed Utilization Rate	100%	75%	
% of participants entering program with status of 'literally homeless'	100%	73%	
Length of time participants are homeless	NA		
% and # of adult participants (stayers/leavers) who increased income	91%	80%	
% of participants who exit to permanent housing	65%	95%	
% of participants remaining in permanent housing after 6+ months	80%	29%	
% of participants accessing one or more mainsream resources/benefits	20%	80%	
CoC cost per bed		\$4,940	
CoC cost per person (adults only)		\$6,916	
Cost per person adults only - total budget		\$9,320.13	
Timely submissions of APRS		ū	
Timely draws from LOCCS	qtrly	ū	

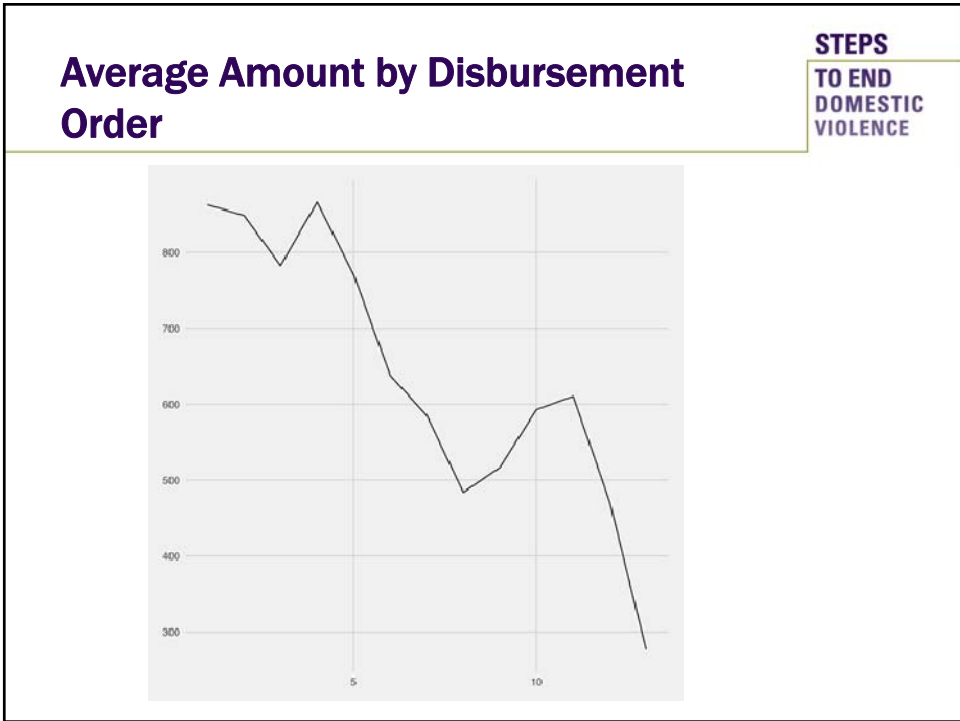
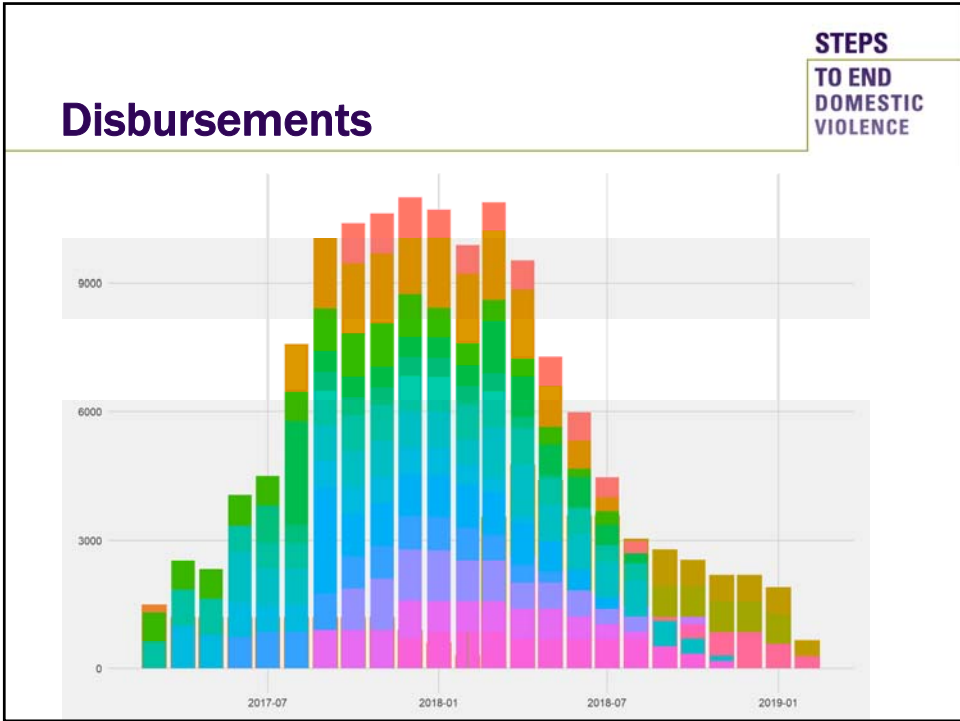


## **Financial Assistance**

- Average total rental assistance \$8,735 per household
- Range \$338-\$1306/month, average/month = \$747
- 17 of 19 households were given security deposits
- Average security deposit: \$919
- 2 of 19 households were given 1<sup>st</sup> and last month's rent (in addition to security deposit)
- Average 1<sup>st</sup> and last months' rent payment: \$2,425
- Average overall support per household = \$9,654

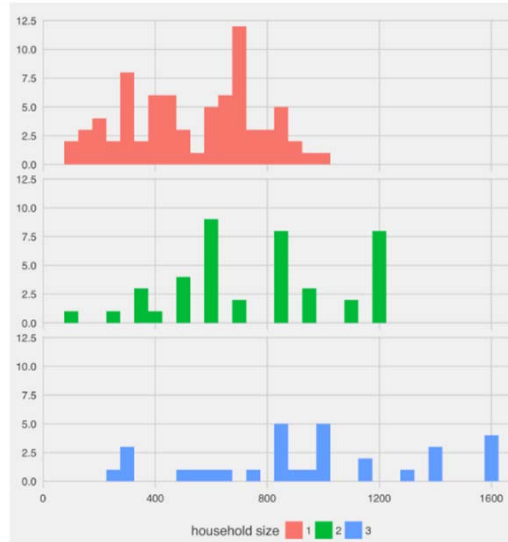
## **Length of Assistance**

- Range of 7-18 months
- Average = 11.7 months



## Current Grant Year Disbursements by Unit Size

**STEPS  
TO END  
DOMESTIC  
VIOLENCE**



## Successes

**STEPS  
TO END  
DOMESTIC  
VIOLENCE**

- Committing virtually all of the funds halfway through the grant year
- Deepening relationships with landlords
- Opportunity for longer term relationship with those who were served through our emergency housing program
- More nimble administrative processes in year 2

## **Challenges**

- Committing virtually all of the funds halfway through the grant year
- Eligibility defined by HUD for up to 24 months, but grant funded 12 months at a time
- Narrow parameters with respect to for whom this type of support works

## **What should CCHA know?**

- Short term rental subsidy is a critical resource for a particular population
- We could serve more people through this program with additional funding
- The needs of those who have experienced domestic violence are unique

**STEPS  
TO END  
DOMESTIC  
VIOLENCE**

**Questions?**